

C33

IGBT Snubber Protection Capacitor

IGBT缓冲吸收电容器

C33



产品特点.Characteristics

- 迈拉胶带封装, 阻燃环氧树脂灌注;
- 镀锡铜线轴向引出;
- 耐压高, 损耗(tgδ)小, 温升低;
- 自感(ESL)小, 等效串联电阻(ESR)小;
- 高脉冲电流、高dv/dt 承受能力;
- PET tape wrapping, epoxy resin sealing
- Axial leads with tinned copper wire
- Resistance to high voltage, low dissipation factor
- Low ESL and ESR
- High pulse current ,high dv/dt

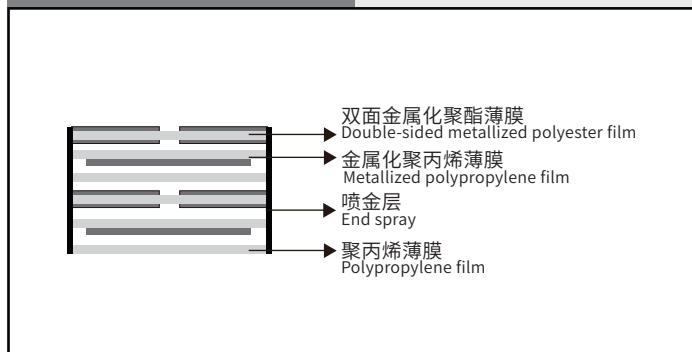
产品应用.Application

- IGBT 缓冲吸收;
- 广泛应用于电力电子装置UPS、逆变器、感应加热、电焊机设备的尖峰电压、尖峰电流吸收保护;
- IGBT Snubber circuit; IGBT Snubber equipment
- Widely used in power electronic equipment UPS, inverter, induction heater, welding machine for protect and absorb peak current and peak voltage.

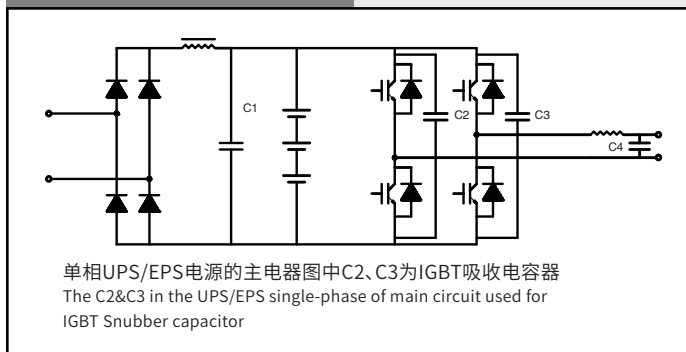
性能参数.Technical Data

● 引用标准Reference Standard	IEC61071 .GB/T17702
● 工作温度范围Operating Temperature Range	-40°C~+70°C Tmax+85°C
● 容量范围Capacitance Range	0.1μF ~5.0μF
● 额定电压Rated Voltage	700VDC~3000VDC
● 容量偏差Capacitance Tolerance	±5%(J); ±10%(K)
● 耐电压Withstand Voltage	1.5Un DC/10S
● 损耗角正切Dissipation Factor	$tg\delta \leq 0.0005 \quad C \leq 1\mu F \quad f=10KHz \quad \text{at } 20^\circ C$
	$tg\delta \leq 0.0010 \quad C \geq 1\mu F \quad f=10KHz \quad \text{at } 20^\circ C$
● 绝缘电阻Insulation Resistance	$C \leq 0.33\mu F \quad R_s \geq 30000M\Omega (\text{at } 20^\circ C \quad 100VDC \quad 60S)$
	$C > 0.33 \mu F \quad R_s \geq 10000S (\text{at } 20^\circ C \quad 100VDC \quad 60S)$
● 阻燃性Flame Retardation	UL94V-0
● 预期寿命Life Expectancy	100000hrs (Un hotspot $\leq 70^\circ C$)

结构图.Construction Diagram



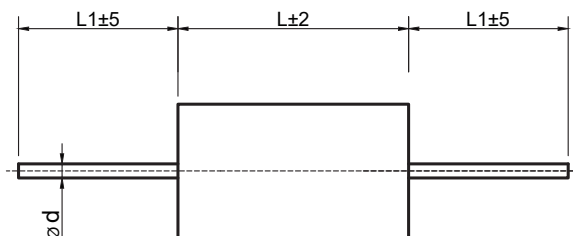
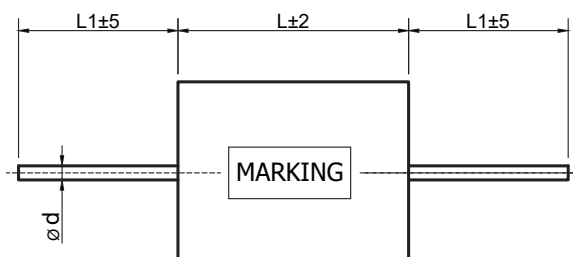
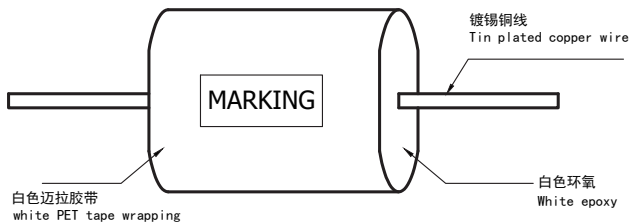
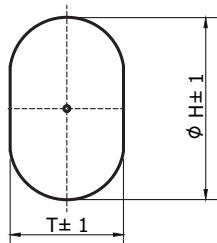
典型线路图.Typical Circuit



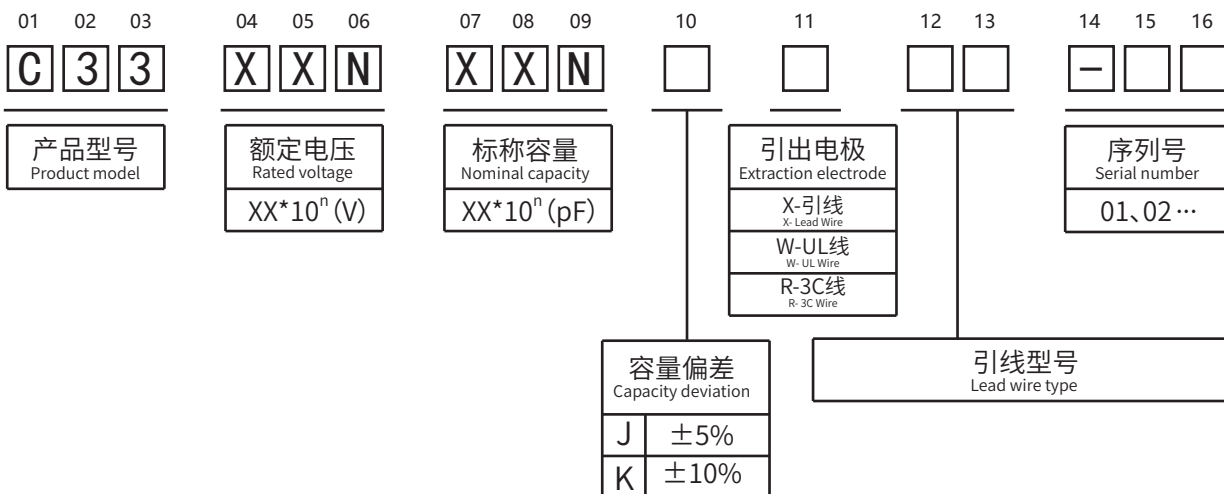
C33

IGBT Snubber Protection Capacitor

产品外形.Product shape



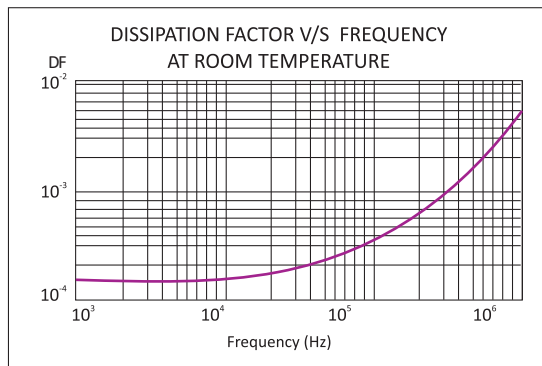
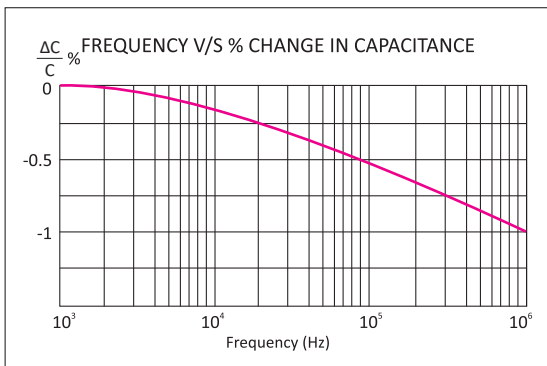
产品编码.Product Coding



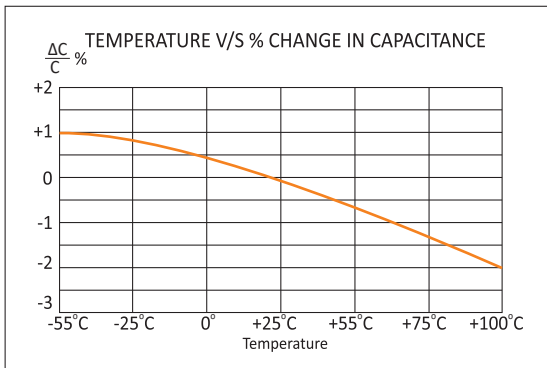
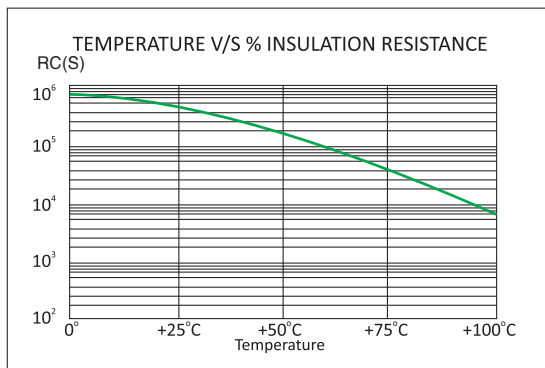
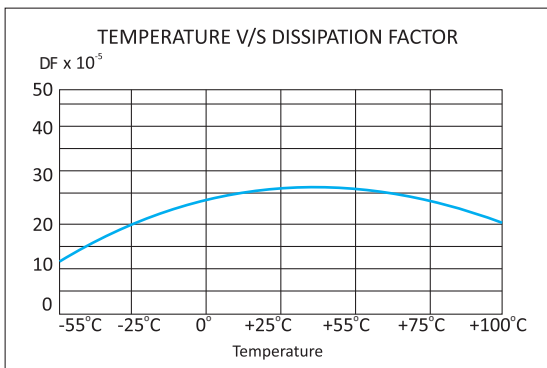
C33

IGBT Snubber Protection Capacitor

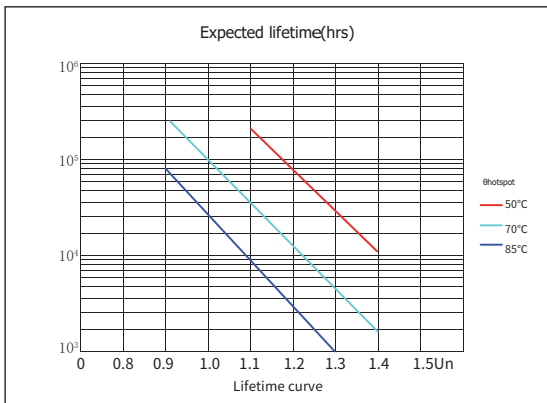
频率特性. Temperature Characteristics



温度特性. Frequency Characteristics



预期寿命 Life Expectancy



C33

IGBT Snubber Protection Capacitor

参数表, Article Table

Part Number	CAP μF	Dimension (mm)				dv/dt (V/μs)	Ipeak (A)	Irms @100KHz70℃ (A)	ESL (nH)	ESR @100KHz20℃ (mΩ)
		L	T	H	d					
U _N 700VDC Urms 380VAC Upk 1000VDC										
C33701334JX08***	0.33	32.0	9.5	17.5	0.8	200	66	6.0	22	14
C33701474JX08***	0.47	32.0	12.0	20.0	0.8	180	84.6	8.0	21	12
C33701684JX10***	0.68	32.0	15.0	23.0	1.0	180	122.4	9.0	20	11
C33701105JX12***	1.0	44.0	14.0	22.0	1.2	150	150	8.5	30	7.5
C33701155JX12***	1.5	44.0	16.5	27.5	1.2	150	225	10	28	7.0
C33701205JX12***	2.0	44.0	20.0	31.0	1.2	130	260	12	25	6.0
C33701225JX12***	2.2	44.0	21.0	32.0	1.2	120	264	13	25	6.0
C33701255JX12***	2.5	44.0	22.5	33.5	1.2	120	300	13.5	24	5.5
C33701305JX12***	3.0	44.0	25.0	36.0	1.2	110	330	14.0	23	5.0
C33701355JX12***	3.5	57.0	22.0	33.0	1.2	110	385	14.2	32	4.5
C33701475JX12***	4.7	57.0	26.0	37.0	1.2	180	846	14.8	32	3.8
C33701565JX12***	5.6	57.0	28.0	40.0	1.2	180	1008	15.0	32	3.5
U _N 1000VDC Urms 480VAC Upk 1400VDC										
C33102104JX08***	0.1	32.0	8.0	12.5	0.8	1100	110	4.0	20	25
C33102154JX08***	0.15	32.0	9.0	15.5	0.8	1100	165	5.0	21	20
C33102224JX10***	0.22	32.0	11.0	19.0	1.0	1000	220	7.0	21	15
C33102334JX10***	0.33	32.0	14.0	22.0	1.0	1000	330	8.5	21	13
C33102474JX10***	0.47	32.0	16.0	27.0	1.0	1000	470	10.5	23	11
C33102684JX10***	0.68	44.0	14.5	26.0	1.0	900	612	10.2	25	6.0
C33102105JX12***	1.0	44.0	18.5	30.0	1.2	850	850	11.0	27	5.6
C33102155JX12***	1.5	44.0	24.0	35.0	1.2	850	1275	12.0	29	5.0
C33102205JX12***	2.0	57.0	22.5	34.0	1.2	600	1200	12.8	32	4.8
C33102225JX12***	2.2	57.0	24.0	35.0	1.2	500	1100	13.5	32	4.2
C33102305JX12***	3.0	57.0	28.5	40.0	1.2	480	1440	15.6	34	3.5
C33102335JX12***	3.3	57.0	33.0	40.0	1.2	450	1485	16.5	36	3.2
U _N 1200VDC Urms 500VAC Upk 1600VDC										
C33122683JX08***	0.068	32.0	7.0	11.5	0.8	1300	88.4	4.5	18	25
C33122104JX08***	0.1	32.0	8.5	13.5	0.8	1200	120	6.0	20	20
C33122154JX10***	0.15	32.0	9.5	17.5	1.0	1200	180	7.5	20	18
C33122224JX10***	0.22	32.0	12.5	20.5	1.0	1200	264	8.3	22	15
C33122334JX10***	0.33	32.0	15.5	23.5	1.0	1200	363	9.0	23	12
C33122474JX10***	0.47	44.0	14.5	22.5	1.0	1100	517	9.8	26	9.0
C33122684JX12***	0.68	44.0	16.5	27.5	1.2	1000	680	11.7	27	6.0
C33122105JX12***	1.0	44.0	21.0	32.5	1.2	1000	1000	12.4	28	5.0
C33122155JX12***	1.5	44.0	27.0	38.0	1.2	950	1425	13.5	30	5.0
C33122205JX12***	2.0	57.0	25.5	36.5	1.2	750	1500	13.8	30	4.8
C33122225JX12***	2.2	57.0	27.0	38.0	1.2	700	1540	14.5	35	4.2

以上表格/图形仅供参考, 以实物为准, (单位: mm)

The above table / graphics are for reference only, subject to the actual product (unit: mm)

C33

IGBT Snubber Protection Capacitor

参数表.Article Table

Part Number	CAP μF	Dimension (mm)				dv/dt (V/μs)	I _{peak} (A)	I _{rms} @100KHz70°C (A)	ESL (nH)	ESR @100KHz20°C (mΩ)
		L	T	H	d					
U _N 1600VDC U _{rms} 500VAC U _{pk} 2000VDC										
C33162473JX08***	0.047	32.0	7.5	13.5	0.8	1500	70.5	4.5	25	25
C33162683JX08***	0.068	32.0	8.5	17.0	0.8	1500	102	6.0	25	22
C33162104JX10***	0.1	32.0	11.0	19.0	0.8	1300	130	7.5	25	18
C33162154JX10***	0.15	32.0	14.5	22.5	1.0	1200	180	8.5	24	16
C33162224JX10***	0.22	32.0	16.5	28.5	1.0	1200	264	9.3	24	15
C33162334JX10***	0.33	44.0	15.5	26.5	1.0	1100	363	10.2	29	12
C33162474JX12***	0.47	44.0	19.5	32.5	1.2	1000	470	11.2	28	9.0
C33162684JX12***	0.68	44.0	24.5	35.5	1.2	1000	680	11.7	27	8.0
C33162105JX12***	1.0	44.0	31.0	42.0	1.2	900	900	12.4	26	5.6
C33162125JX12***	1.2	57.0	27.5	38.5	1.2	800	960	12.5	35	5.5
U _N 2000VDC U _{rms} 630VAC U _{pk} 2500VDC										
C33202223JX08***	0.022	32.0	5.5	12.0	0.8	1800	39.6	3.0	25	34
C33202333JX08***	0.033	32.0	7.0	13.5	0.8	1800	59.4	4.0	24	31
C33202473JX08***	0.047	32.0	8.0	16.5	0.8	1500	70.5	5.5	24	29
C33202683JX08***	0.068	32.0	10.5	18.5	0.8	1500	102	6.9	23	25
C33202104JX10***	0.1	32.0	13.0	21.5	1.0	1500	150	8.2	22	18
C33202154JX10***	0.15	44.0	12.5	20.5	1.0	1200	180	8.5	31	16
C33202224JX10***	0.22	44.0	15.5	23.5	1.0	1100	242	9.0	31	15
C33202334JX12***	0.33	44.0	18.5	30.0	1.2	1100	363	10.2	30	12
C33202474JX12***	0.47	44.0	23.5	34.5	1.2	1100	517	12.4	29	10
C33202684JX12***	0.68	57.0	23.0	34.0	1.2	1000	680	14.2	27	8.0
C33202105JX12***	1.0	57.0	29.0	40.0	1.2	950	950	14.5	31	6.0
U _N 3000VDC U _{rms} 750VAC U _{pk} 3500VDC										
C33302682JX08***	0.0068	32.0	5.0	10.0	0.8	3000	20.4	2.3	18	33
C33302103JX08***	0.01	32.0	6.0	12.5	0.8	3000	30	3.0	18	27
C33302223JX08***	0.022	32.0	8.5	16.5	0.8	2500	55	5.5	19	24
C33302333JX10***	0.033	32.0	11.0	19.0	1.0	2500	82.5	7.0	19	22
C33302473JX10***	0.047	32.0	14.0	21.5	1.0	2000	94	8.5	20	20
C33302683JX10***	0.068	44.0	12.5	21.0	1.0	1800	122.4	10.5	20	18
C33302104JX12***	0.1	44.0	14.5	26.0	1.2	1500	150	12.4	20	16
C33302224JX12***	0.22	44.0	24.0	35.0	1.2	1200	264	14.5	22	15
C33302334JX12***	0.33	57.0	24.0	35.5	1.2	1200	396	15.5	23	14.5

以上表格/图形仅供参考, 以实物为准, (单位:mm)

The above table / graphics are for reference only, subject to the actual product (unit: mm)